



# *COG SQUEAKS*

*June & May 2000*



**Waterfall**

Photo by Bill Walden

# GROTTO INFORMATION PAGE

## THE CENTRAL OHIO GROTTO

The Central Ohio Grotto of the national Speleological Society meets at 8:00 p.m. at the Worthington Presbyterian Church the second Friday of most months. The church is on the northwest corner of the square in Worthington. Parking is available behind the church. Enter the parking lot from the first side street off State Route 161. Please contact a grotto officer to confirm meeting time and place.

### Grotto Officers

Chairman	Steve Aspery	38931	614-841-1846
Vice Chair	Dick Maxey	28034	614-888-2285
Secretary	Katie Walden	25894	740-965-2942
Treasurer	Karen Walden	15678	740-965-2942
Executive Committee Members Officers plus:			
	Don Conover	20386	937-372-7581
	Darrell Adkins	29048	740-392-6382
	Doug Burke	41817	614-983-9336
Squeaks Editor	Bill Walden	740-965-2942	
	bwalden@infinet.com		

### Grotto Address

C/O Bill Walden, 1672 South Galena Road, Galena, Ohio 43021  
740-965-2942. E-mail [bwalden@infinet.com](mailto:bwalden@infinet.com) **CHANGED**

### List servers

[Cog@ontosystems.com](mailto:Cog@ontosystems.com) – Central Ohio Grotto

[KCS@ontosystems.com](mailto:KCS@ontosystems.com) – Kentucky Cave Survey

Please join by sending e-mail with the subject **subscribe**.

**Grotto Membership Dues \$15 per individual or \$20 per family.**

### The C.O.G. Squeaks

The C.O.G. Squeaks is the official newsletter of the Central Ohio Grotto. Articles on cave exploration and study, cave trips reports, cave fiction, cave poetry, cave-related cartoons, cave-related art or photographs are encouraged. Please send material to Bill Walden via mail, e-mail, disk, fax, or even dictation. Bill usually has disks available at meetings. NSS organizations may reprint information from the C.O.G. Squeaks so long as the author and Squeaks are given credit unless stated otherwise.

## KARST CALENDAR

June 9	Grotto Meeting
June 9-11	Karst-O-Rama at Great Salt Petre Preserve
June 17	Grotto Caving Trips. Pulaski County. Surveying in Kneeshredder Cave.
June 26 – 30 2000	<b>NSS Convention</b> , Elkins, WV
Sept. 8-10	Karst Encounters, Muscatatuck County Park in North Vernon, Indiana. Contact Mark Webb 317- 738-9646 <a href="mailto:MTW96@aol.com">MTW96@aol.com</a> .
Dec. 31, 2000	New Years Eve Party at GSPCP. Come and celebrate the end of the 20th century.

July 23 – 27, 2001 **2001: a Cave Odyssey. The NSS Convention at Great Saltpetre Cave Preserve, Mt. Vernon, Kentucky.**

June 24-28, 2002 NSS Convention, Camden, Maine

August 4-8, 2003 NSS Convention, Poterville, Cal.

### COG Field House Update

Bill Walden stayed at the field house May 22<sup>nd</sup> and 23<sup>rd</sup>. Shingles were added to the two end peaks and a rock wall was laid on the front and left sides.

Remaining to do:

- 1) Complete the siding on the right side.
- 2) Continue rock wall on the rear.

## TRIP REPORTS

April 29<sup>th</sup> Bill Walden, Katie Walden and Kevin Toepke visited the Redmond Creek area to search for entrances. We decided to check Lucky Camp Hollow even though Pat and Greg Erisman had previously checked that hollow.

Following directions from the landowner Kay Koger we located a pit entrance on the north side of Lucky Camp Hollow on the hill top. The walk in entrance drops 20 feet to a ledge and then 38 feet to a tin covered floor. We did not attempt to climb the pit that day.

We hiked up Lucky Camp Hollow and located an entrance in the floor of the dry creek bed. At this point the entrance was accepting water from a spring on the left side of the hollow. The spring comes out of the Bangor limestone, flows down the hillside, then down the otherwise dry creek bed and into the entrance. Kevin pulled some rocks from the entrance but none of us wanted to get soaked that day.

Continuing up hollow we located yet a third entrance off to the right of the dry streambed. Again water was coming from a spring in the Bangor limestone, flowing down the hillside and into a pit entrance to the right of the streambed. Again none of us wanted to get soaked. We did not attempt to enter.

We returned to Mr. Koger's cabin and reported our findings. Kay gave us another lead on an entrance. This time we could not locate it. We returned to the Koger's cabin. Mr. and Mrs. Koger were getting ready to hunt morel mushrooms.

May 19<sup>th</sup> Bill Walden, Steve Aspery and Lacie Braley visited the Pit at

Redmond Creek. Bill rigged the pit using a rock outcrop near the entrance as a primary rig point and a second rock outcrop centered over the pit as a secondary rig point to keep the rope away from the ledge. Steve descended first. As Steve was descending, Bill was leaning against the secondary rig point and he felt it move. Yikes, not a good rig point! After Steve was safely off rope, Bill re-rigged allowing the rope to break over the ledge using a mail bag as a rope pad and a tree outside as a secondary rig point and safety. Steve noted that small pebbles sounded like boulders as they struck the tin covered bottom of the pit.

Bill and Lacey descended with out incident. We began surveying through a series of rooms some with very loose break down. At one point Steve insisted on removing a large rock hanging from the ceiling. We put in but ten survey stations before quitting. There was no obvious way to go.

Returning to the pit, Steve checked a lead going north. It dropped several times before pinching out.

The pit was a disappointment. There used to be a house nearby. The tin is probably the remains of the roof. Other trash including a lawnmower lines the pit from top to bottom. I have already suggested to John Cole that we consider Redmond Creek Caves as a clean up project for 2002. Perhaps if we remove all the trash . . .

We stopped at Sonny's in Somerset for dinner. Lacie drove over to Great Saltpetre Cave Preserve where she planned to help with the GSP Cave Preserve open house.

Saturday Steve and I joined Lee Florea, Kevin Toepke, John Cassidy, and Harry Goepel to survey in Kneeshredder Cave. (This was John's first survey trip. I hope he joins us again.) We had enough cavers for two survey teams. We double teamed upstream from the sink entrance surveying a narrow stream canyon with sharp rocks. This was one of John's first really wild cave trips. Apparently he liked it. At one point I spotted a side lead to the right and followed it to check it. It started as an easy stream canyon then opened to a wide borehole (well borehole is a slight exaggeration). Lee, John and I started to survey into it but ran out of time before getting to the larger passage. I promised Lee 100-foot shots. Well, that remains to be seen. We hope to continue the survey the weekend before convention.

Sunday Bill Walden, Kevin Toepke, Lee Florea, and Harry Goepel returned to Redmond Creek to check the entrances up Lucky Creek Hollow. We began with the entrance in the streambed. No water flowed into it this day. Kevin went in but found the way blocked by organic debris. We will need digging tools including a winch.

We continued upstream to the second entrance. Water was cascading into it from the spring above. Kevin climbed down but found the only way blocked by rocks. Bill descended and started pounding on the rock with another rock. After breaking three rocks on the obstruction, the forth rock prevailed and the opening was made large enough to enter.

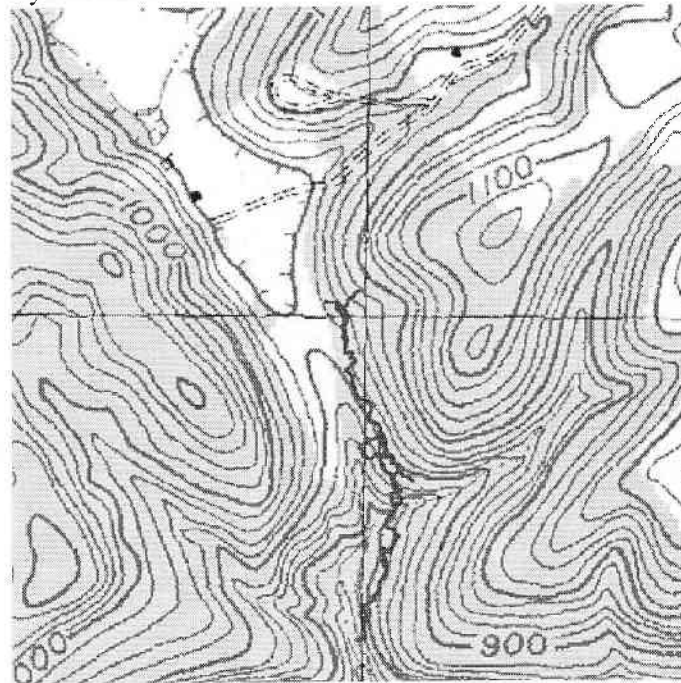
Lee and Harry entered but found the way blocked after a couple hundred feet. Digging required.

Kevin wanted to show off one of the entrances that he had observed on an earlier trip. However, he led us to the wrong entrance. Lee and Harry commented that they would like to see Redmond Creek Cave. We entered the secondary entrance and found the cave passable. We traveled to the water filled passage at the end of the survey. I pointed the way to the eastern and western parts of the system.

We departed and went our separate ways.

## Kneeshredder Cave

By Lee Florea



**Kneeshredder overlay Map by Randy Paylor**

Thanks all for your help in surveying this great cave.

Kneeshredder continues to expand with two new trunk passages found on a fourth level at the top of Clinger Canyon. On Saturday two teams pulled in 42 stations adding another ~700 feet to the cave. Bill found a trunk passage late in the day and returned with tales of grandeur and 100 foot shots in a "borehole". [Headed straight into the hill. – ED]

Here are some stats:

Stations = 214  
Length = 4428.6 feet  
depth = 117.4 feet

I am planning to work this cave hard between now and Convention. If you have some free time, give me a yell.

